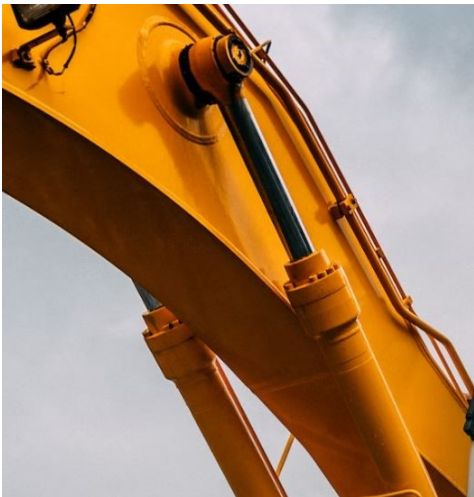


Authorized Stocking Distributor  
**SPHERICAL PLAIN  
BEARINGS**



Spherical plain bearings are designed to carry radial and axial loads in a small envelope, and are ideal for static and oscillatory applications where moderate misalignment may exist.

**High Load Capacities**  
**Re-lubricatable Options**  
**available**  
**Pivoting Ability**  
**Available in Inch & Metric**  
**(Standard, Heavy Duty or**  
**Sealed)**

Intercontinental Bearing Supply Company  
17711 Telge Road Cypress, TX 77429  
P: 800-231-6480 E: [sales@ibsc.com](mailto:sales@ibsc.com)

## GENERAL SERIES INTERCHANGE

Inch Series		IBSCO	RBC	SKF	Torrington	INA	IKO
Standard Duty	Unsealed	GEZ-ES	B-L	GEZ-ES	SF	GE-ZO	SBB
	Sealed	GEZ-ES-2RS	B-LSS	GEZ-ES-2RS	SF-TT	GE-ZO-2RS	SBB-2RS
Self Lubricating	Sealed	GEZ-ET-2RS	B-LFSS	GEZ-TE-2RS	SFL	*	*
Heavy Duty	Unsealed	GEGZ-ES	BH-L	GEZH-ES	SFH	*	*
	Sealed	GEGZ-ES-2RS	BH-LSS	GEZH-ES-2RS	SFH-TT	*	*
Standard Duty	Unsealed	GEWZ-ES	B-EL	GEZM-ES	*	*	*
Extended Inner Race	Sealed	GEWZ-ES-2RS	B-ELSS	GEZM-ES-2RS	*	*	*
Angular Contact	Thrust Style	GACZ-S	B-SA	GAZ-SA	SBT	*	*
Metric Series		IBSCO	RBC	SKF	Torrington	INA	IKO
Standard Duty	No Lube Groove Or Oil Holes	GE-E	*	GE-E	*	GE-DO	GE-E
	Unsealed	GE-ES	MB	GE-ES	FS	GE-DO	GE-ES
	Sealed	GE-ES-2RS	MB-SS	GE-ES-2RS	FS-TT	GE-DO-2RS	GE-ES-2RS
Self Lubricating	Sealed	GE-ET-2RS	MB-FSS	GE-TE-2RS	*	GE-UK-2RS	GE-EC-2RS
Heavy Duty	Unsealed	GEG-ES	MBH	GEH-ES	FSH	GE-FO	GE-GS
	Sealed	GEG-ES-2RS	MBH-SS	GEH-ES-2RS	FSH-TT	GE-FO-2RS	GE-GS-2RS
Standard Duty	Unsealed	GEEW-ES	*	GEG-ES	*	GE-LO	*
Extended Inner Race	Sealed	GEEM-ES-2RS	MB-ESS	GEM-ES-2RS	*	GE-HO-2RS	*
Angular Contact	Thrust Style	GAC-S	MB-SA	*	*	GE-SX	*

\* Not produced by manufacturer

